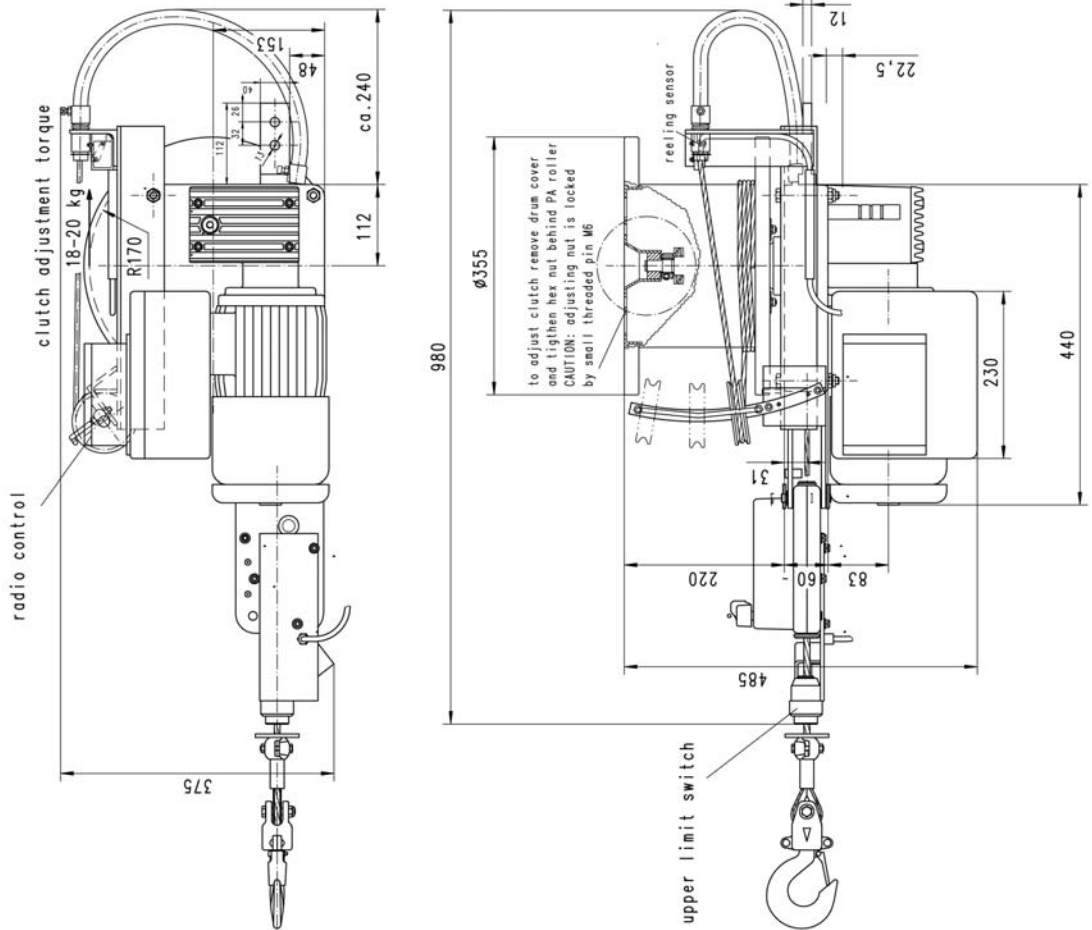


Newly developed by Tractel Inc. this hoist comes from 30 years experience and over 60,000 hoists sold worldwide.
Manufactured in Germany for quality.

SAFETY - Avoid injury to arms, legs, and feet by giving the operator control of position and movement.
No hand signals, no communication failure that can be hazardous to the user.



Features and Specifications

Oilpatch model XE301P

- Rated load 700 lbs. single parted
- Speed 35 ft./min. constant speed
- Power 110V, 12A, 0.55 kW
- Control FCC radio control 458 MHz Unique address, 3 x 1.5 AA batteries
- Operating temperature -40 to 70 Celsius
- Operating range 100 m internal antenna
- Gearbox- low temp synthetic oil lubrication
- Strength factor > 4 to 1 on hoist
- Size compact 980 x 375 x 485 mm
- Motor TEFC 100% duty
- Reeler capacity 100 m x 5/16" (8mm)
- Emergency stop button
- LED power on indicator light
- **3 Brakes:**
 - Secondary brake protects against wire rope run-off
 - Controlled descent brake for emergency lowering without power
 - Primary electromagnetic brake
- Reeler slack wire sensor switch
- Rotation resistant 8 mm wire rope with swivel
- Upper limit switch prevents two-blocking

General Hoist Range

- 700 lbs. to 5,300 lbs. single parted
- 35, 70, 17/35, 35/70 ft./min., 2 speed, variable speed
- 110V, 220, 220 3 phase, 480 575, air powered, direct or pendant control, wireless radio, rechargeable available
- -20 Degrees Celsius to 70 Degrees Celsius to
- Up to 300m external gain antenna
- EP6, 80 W90W multigear oil
- TEFC 100% duty up to 500 m
- Strength factor > 4 to 1
- Motor TEFC 100% duty
- Up to 500m reelers
- Emergency stop button
- **3 Brakes:**
 - Secondary brake protects against wire rope run-off
 - Controlled descent brake for emergency lowering without power
 - Primary electromagnetic brake